

Smart PDU Utility

User Manual



Smart PDU

Table of Contents

1. Introduction	1
2. Installation.....	2
3. Smart PDU Utility Interface	3

1. Introduction

General

Smart PDU Utility is advanced PDU monitoring, management software. It has been designed to provide information about power conditions and status of Amazing PDU and power environment.

Its functions have

1. Monitor a large amount of Amazing PDU power consumption simultaneously.
2. Group Management of a large amount of the Amazing PDU.
3. Provide power consumption chart for daily monthly or the user-defined period report.
4. Send the email and trap to the specific account when the power event occurs.
5. Forward the trap to the user-defined account.
6. Events can be logged and exported to the Syslog server.

2. Installation

Install the Smart PDU Utility.

Put the CD to CDROM; select the “Install Smart PDU Utility” to install the utility.



Note:

1. It will take several minutes if your operation system had not been installed Microsoft .NET Framework yet.
2. Recommend that install the Smart PDU Utility to the server level of Windows operation system.

3. Smart PDU Utility Interface

Start

The Login Screen.

The default User Name is **admin**, Password is **1234**.



After login to the software, you will see the software interface as following, it contains four sections:

1. **Function Menu:**

Smart PDU Utility functions bar.

2. **Smart PDU List:**

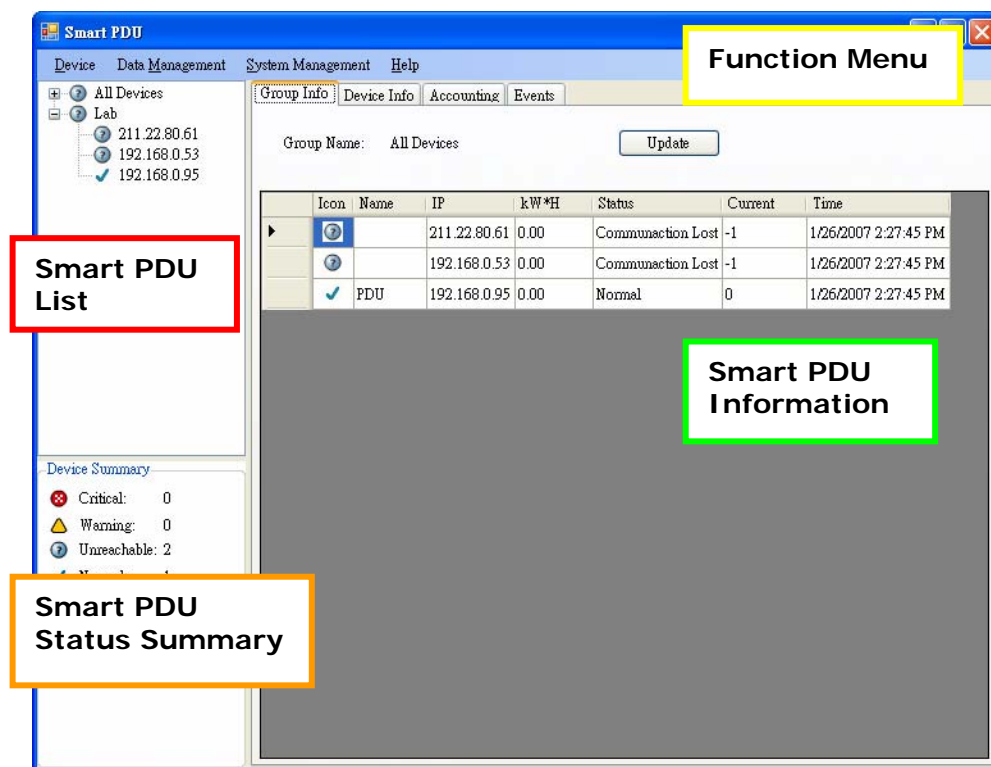
List all the Amazing PDU in the network; user can define the group to easily manage a large amount of the Amazing PDU.

3. **Smart PDU Information:**

This area provides all detail information about the Amazing PDU.

4. **Device Summary:**

Indicate the status of the monitored Amazing PDU in the network.

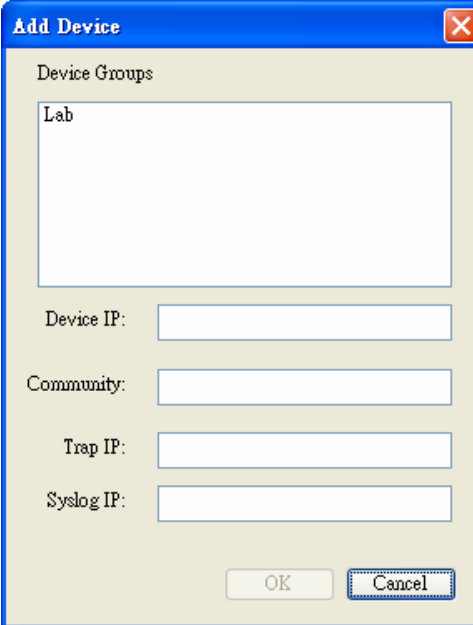


Function Menu

Device

Add Device

Administrator can add the Amazing PDU by manually if the IP address of Amazing PDU had been setup before.



Device Group: Select the Amazing PDU belongs to which group

SNMP Community: Set the community, it must the same with the Amazing PDU in order to communicate with it. **Default setting is "private"**

Note1: This community is set for the authority of "WRITE".

Note2: The "READ" community is set to "public", and user can not change.

Trap forward IP: When event occurs, it can forward the event trap to the certain NMS.

Syslog server IP: Forward the log to the certain Syslog server.

Edit Device

Administrator can redefine the Amazing PDU information

here, including

Device Group: Change the Amazing PDU belongs to which group

SNMP Community: Set the community, it must the same with the Amazing PDU.

Note: This community is set for the authority of "WRITE".

Trap forward IP: Change the trap receiver IP.

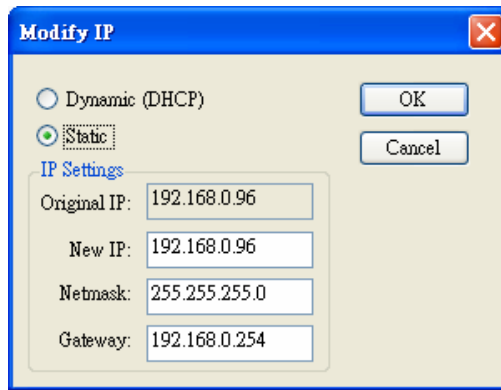
Syslog server IP: Change the Syslog server IP.

SNMP Settings: Modify the SNMP information for the Amazing PDU.

Network Settings: Re-defined the IP address of Amazing PDU.

The screenshot shows the 'Device Edit' window. At the top, the 'Hostname' is 'PDU'. Under 'Local Settings', the 'Device Groups' list has 'Lab' selected. Below it, the 'Community' is 'private'. There are empty fields for 'Trap Forward IP' and 'Syslog Server IP'. Under 'SNMP Settings', 'Name' is 'PDU', 'Location' is 'My Office', and 'Contact' is 'Administrator'. Under 'Network Settings', the 'IP Address' is '211.22.80.61' with a 'Modify' button below it. 'OK' and 'Cancel' buttons are at the bottom right.

Manager can change the method that Smart PDU Utility to get the IP.

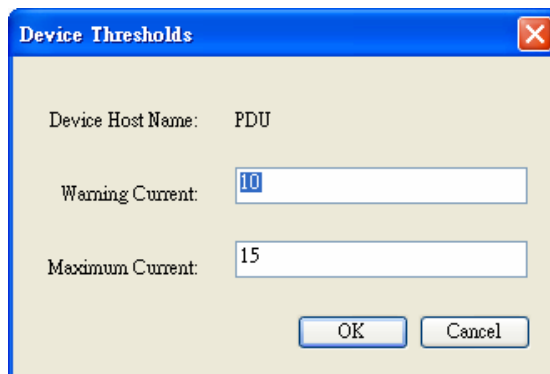


Remove Selected Device

Delete the selected the IP address of Amazing PDU

Device Thresholds

Redefine the point of Warning and overload for power current. The minimum warning value is 0.6 amp.

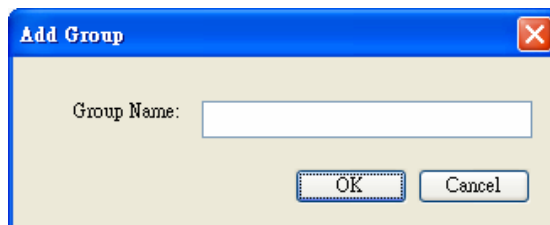


Update Device Information

Update the Amazing PDU information manually.

Add Device Group

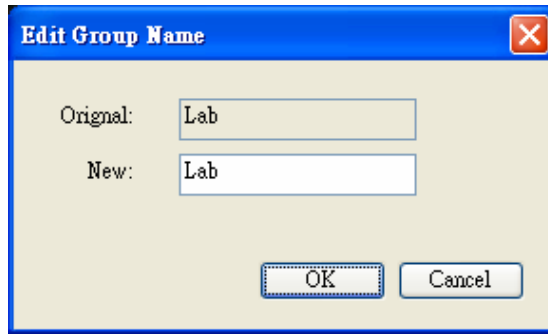
Create a new group.



The default group is named "Lab".

Edit Group

Rename the group



Remove Group	Delete an existing group. All Amazing PDU listed under this group must be removed first.
--------------	--

Data Management

Export Current Accounting to CSV	Export current data to server with CSV format.
----------------------------------	--

Export Events to CSV	Export event log to server with CSV format.
----------------------	---

Remove Current Accounting Records	Delete the current data.
-----------------------------------	--------------------------

Remove Event Records	Delete event log.
----------------------	-------------------

Remove Power Consumption Records	Delete power consumption data.
----------------------------------	--------------------------------

System Management

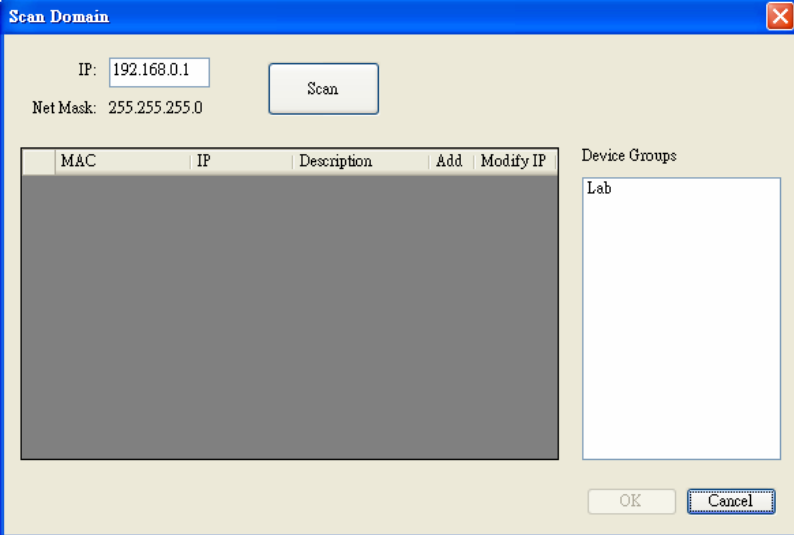
Scan Subnet	Search all IP addresses of Amazing PDU that are connected under the same subnet.
-------------	--

Procedure:

1. Input the IP that utility will scan the given network.
example:
Input 192.168.2.1, utility will scan the IP from 192.168.2.1 to 192.168.2.254
2. Press the "Scan" Button to search all Amazing PDU devices under this subnet.
3. Checked the box of "ADD" that you want to add to Smart PDU Utility.
4. Select one of the groups in the "Device Group" to

category the Amazing PDU.

5. Select "OK" to finish the procedure.



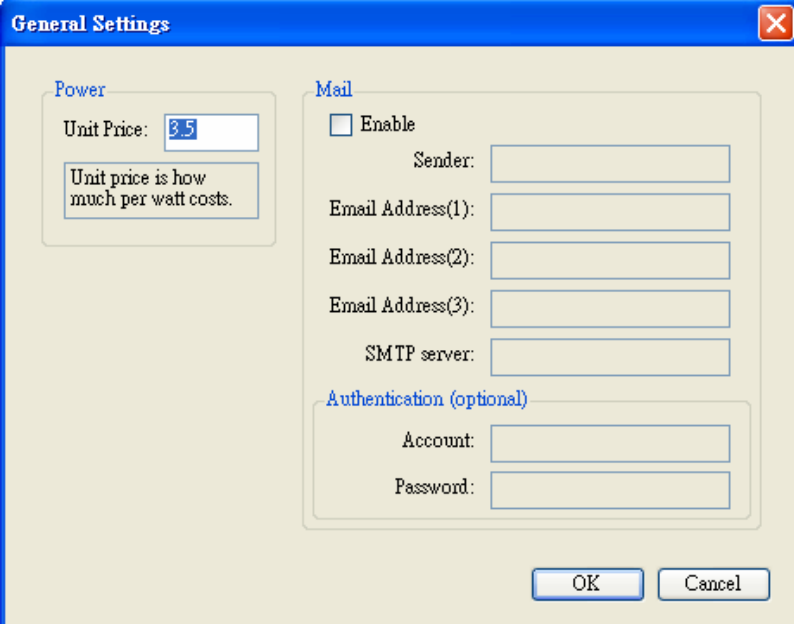
The "Scan Domain" dialog box has a blue title bar with a close button. It contains input fields for "IP:" (192.168.0.1) and "NetMask:" (255.255.255.0), a "Scan" button, and a table with columns: MAC, IP, Description, Add, and Modify IP. The table is currently empty. To the right of the table is a "Device Groups" section with a list box containing "Lab". At the bottom right are "OK" and "Cancel" buttons.

MAC	IP	Description	Add	Modify IP
-----	----	-------------	-----	-----------

Note: According the network condition, sometimes will not search out the Amazing PDU totally, user may need to press the scan one more time to get all the IP address of Amazing PDU in the network.

General Setting

This setting contains two functions.



The "General Settings" dialog box has a blue title bar with a close button. It is divided into two sections: "Power" and "Mail".

Power

Unit Price:
Unit price is how much per watt costs.

Mail

☐ Enable

Sender:

Email Address(1):

Email Address(2):

Email Address(3):

SMTP server:

Authentication (optional)

Account:

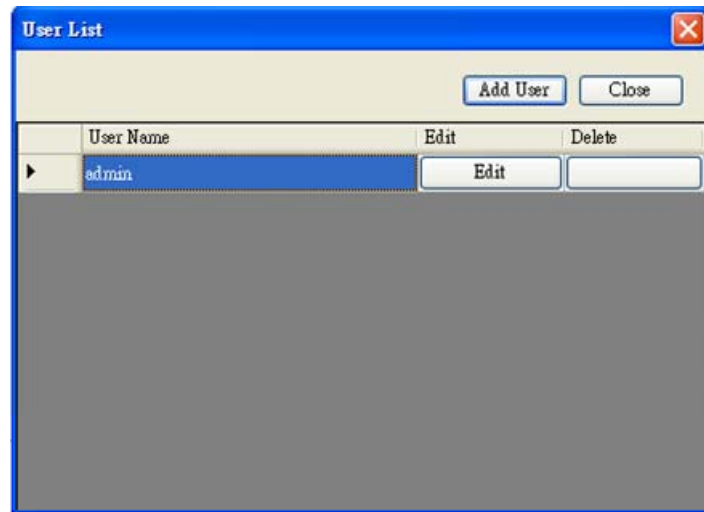
Password:

At the bottom right are "OK" and "Cancel" buttons.

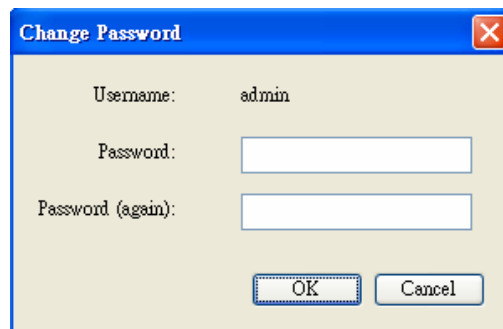
1. Power:
The Amazing PDU can provide the accounting of power consumption based on the reference power rate.
Manager can input the reference rate for per watt cost.
2. Mail:
When the event occurs, Smart PDU Utility can send out the email message to the pre-defined account.

User List

Administrator can add, delete and manager all the user privilege here.

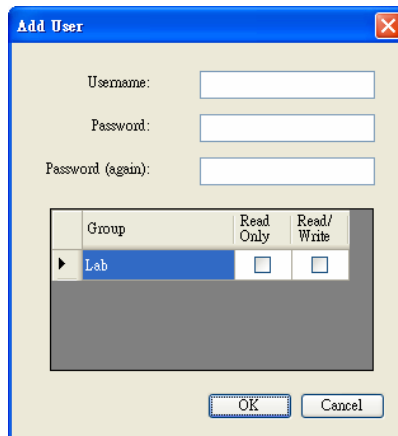


User can only change the password for the "Admin" account.



Add user

User can be assigned to the authority of Read only or Read/Write.

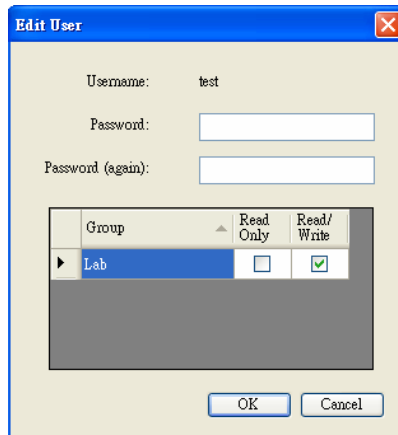


The 'Add User' dialog box contains three text input fields for 'Username', 'Password', and 'Password (again)'. Below these is a table with columns for 'Group', 'Read Only', and 'Read/Write'. The 'Lab' group is selected, and both 'Read Only' and 'Read/Write' checkboxes are present but unchecked. 'OK' and 'Cancel' buttons are at the bottom.

Group	Read Only	Read/Write
▶ Lab	<input type="checkbox"/>	<input type="checkbox"/>

Edit User:

Change the password, authority for the user.



The 'Edit User' dialog box shows the 'Username' field filled with 'test'. The 'Password' and 'Password (again)' fields are empty. In the table, the 'Lab' group is selected, 'Read Only' is unchecked, and 'Read/Write' is checked with a green checkmark. 'OK' and 'Cancel' buttons are at the bottom.





Group	Read Only	Read/Write
▶ Lab	<input type="checkbox"/>	<input checked="" type="checkbox"/>

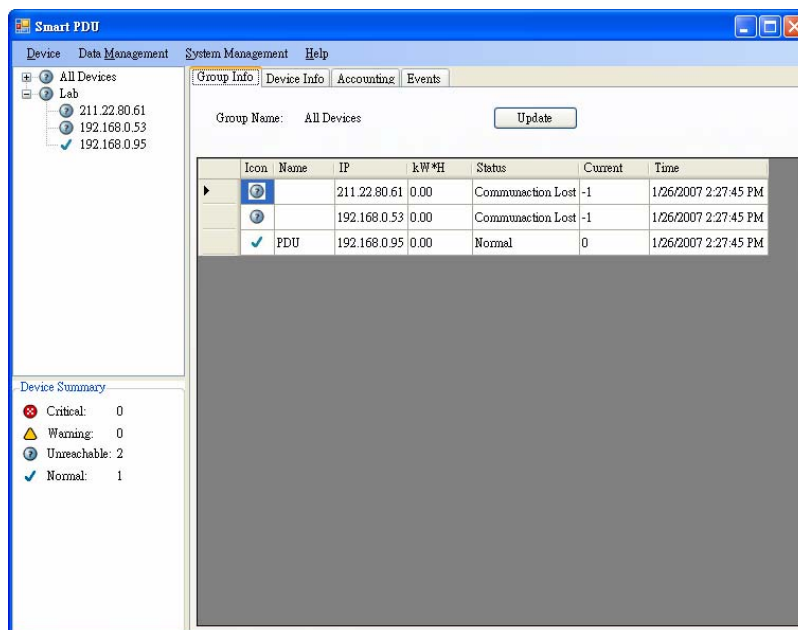
Smart PDU Information

Group Information:

List all Amazing PDU in this table and provide some important information.

Device Summary

-  Critical: Indicate output power of the Amazing PDU exceeds the setting of overload.
-  Warning: Indicate output power of the Amazing PDU exceeds the setting of warning.
-  Unreachable: Indicate that Smart PDU Utility can not reach the Amazing PDU.
-  Normal: Indicate the Amazing PDU is working normally.



- Icon: Indicate the Amazing PDU status by different icon.
- Name: The name of Amazing PDU.
- IP: The IP address of Amazing PDU
- Status: Indicate the communication status with Smart PDU Utility.

- Normal: The Smart PDU Utility communicates with Amazing PDU normally.
- Querying: The Smart PDU Utility is requesting data from the Amazing PDU.
- Communication Lost: The Smart PDU Utility can not get data from the Amazing PDU.
- Warning: The power consumption of Amazing PDU exceeds the threshold of warning.
- Overload: The power consumption of Amazing PDU exceeds the threshold of overload.

Current: The Amazing PDU power consumption.

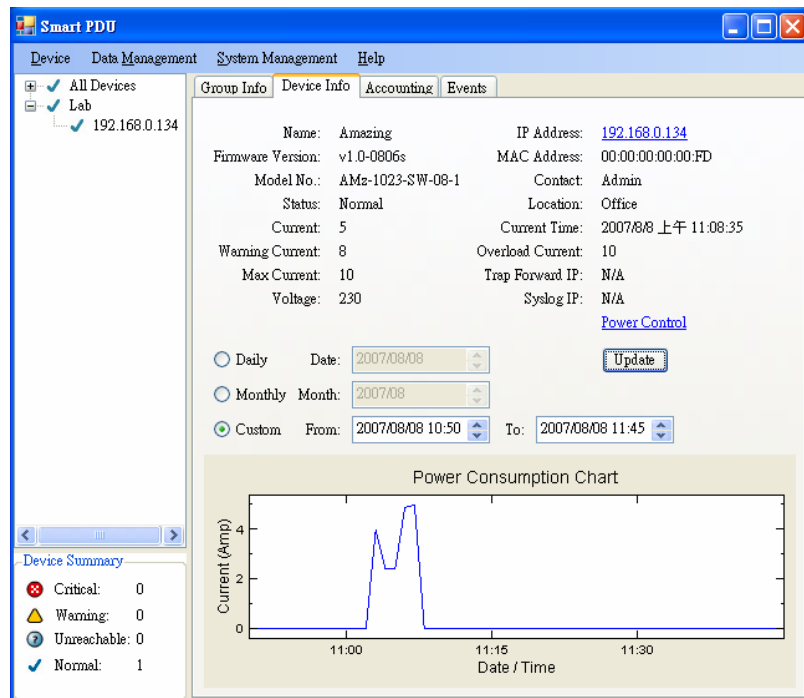
Time: The current time.

Device Information:

Indicate the individual device information, including:

- | | |
|--------------------|---|
| ● Name: | ● IP Address:
Click the IP can open this web page. |
| ● Firmware Version | ● MAC Address |
| ● Model No. | ● Contact |
| ● Status | ● Location |
| ● Current | ● Current Time |
| ● Warning Current | ● Overload Current |
| ● Max. Current | ● Trap Forward IP |
| ● Voltage | ● Syslog IP |
| | ● Power Control: Link to the power control web page. |

Note: This only supports the Amazing PDU- Switched series.



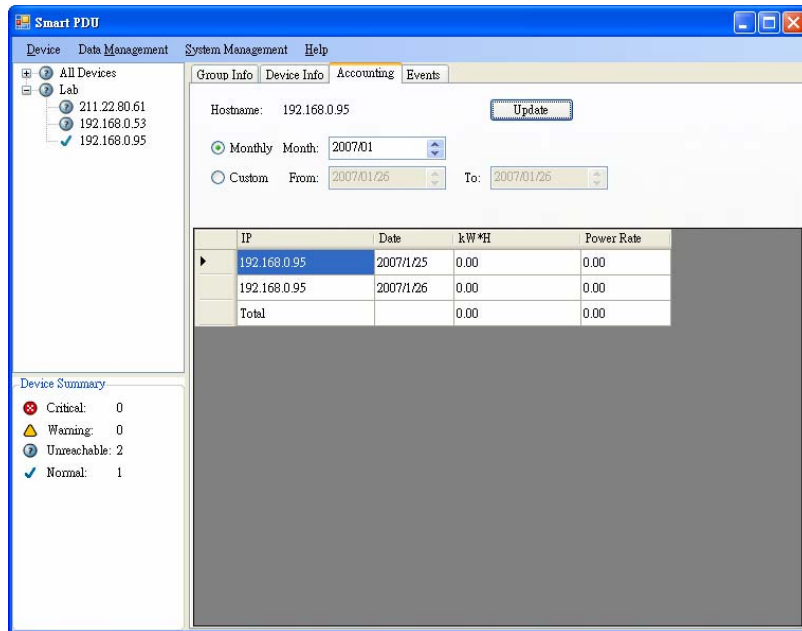
Power Consumption Chart:

Provide the chart for the Amazing PDU power consumption record. Administrator can check the record by Daily, Monthly, Custom-defined time period.

Accounting:

The Amazing PDU is able to provide the accounting of Amazing PDU power consumption.

IP:	The IP address of Amazing PDU.
Date:	The last calculated time.
kW*H:	The power consumption of Amazing PDU.
Power Rate:	The estimated power rate of the Amazing PDU.



Events:

All Amazing PDU events are recorded and listed in this table.

